

Jindabyne Education Campus

Project update | June 2024



As part of the NSW Government's plan to rebuild public education, the 2024-25 Budget is delivering record education funding, including \$1.4 billion for new and upgraded schools in regional NSW. This targeted investment will ensure growing communities get access to a world class public education.

As part of this investment a project is underway to build a new education campus in Jindabyne. The purpose-built campus will include a primary school and high school, known as Jindabyne Public School and Jindabyne High School, as well as a public preschool, with modern facilities to support students, teachers, and the community.

Progress update

Construction of the Jindabyne Education Campus is progressing well and is nearing completion. Road works will begin soon to provide access to the schools.

Works will also be commencing on the new shared pathway from Jindabyne town to the new campus and the power supply to ensure adequate power for the new school site.

The schools are forecast to be completed this year and open in 2025, with planning now underway to deliver the preschool in coming years. Later this year, we will provide further updates on the road works set to be delivered before the schools open.

Barry Way upgrade works

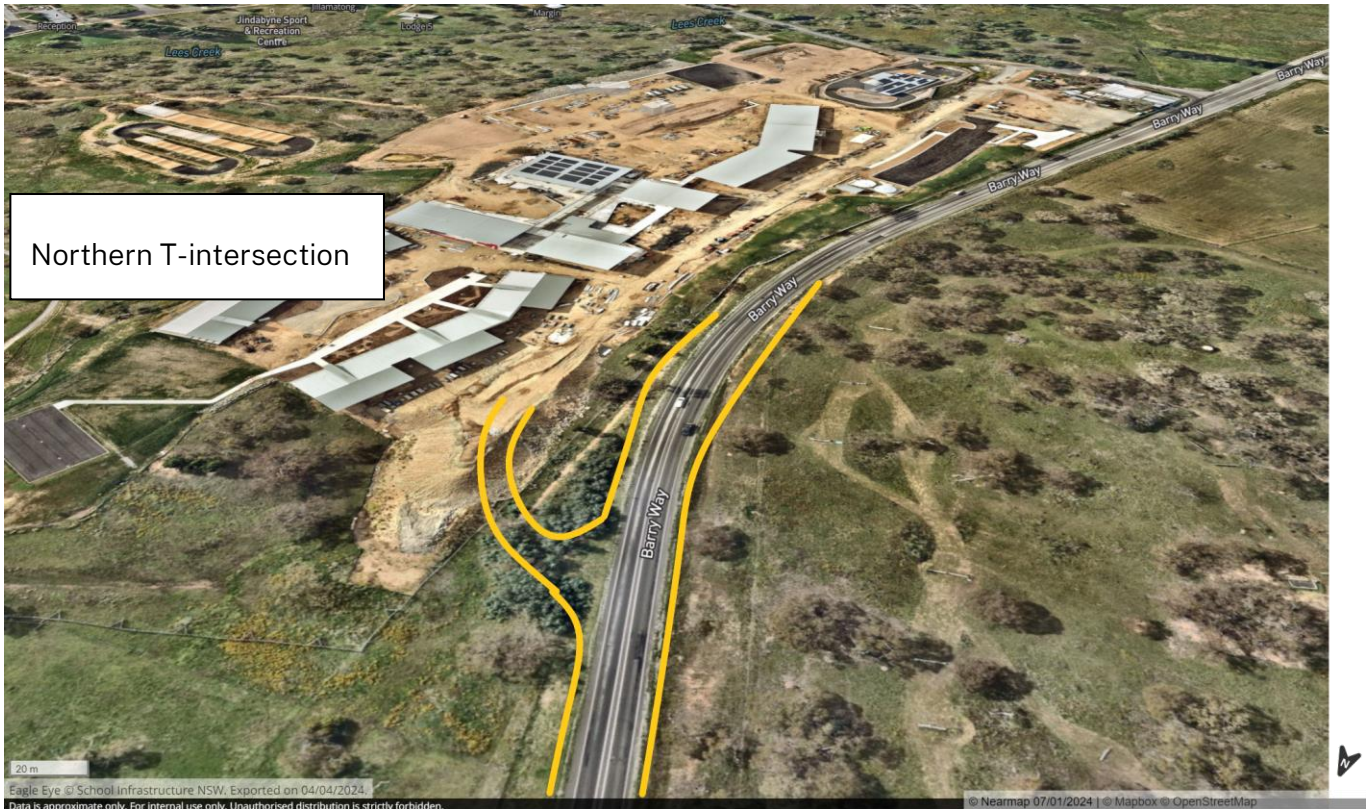
Works on Barry Way to provide safe access for students, staff and vehicles traveling to, near and within the Jindabyne Education Campus are expected to start from late June 2024. The purpose of this work is to:

- create a new intersection on the northern side of the school site
- create a roundabout on the southern side of the school site
- reduce the speed limit along Barry Way adjacent to the school from 100km/hr to 80km/hr
- include a school zone that will reduce speed to 40km/hr in school times



Email: schoolinfrastructure@det.nsw.edu.au
Phone: 1300 482 651
www.schoolinfrastructure.nsw.gov.au

The two maps below show the upgrades to Barry Way.



Temporary closure on Barry Way

To ensure that this work can be delivered safely, there will be a partial closure of a section of Barry Way between the northern end of the Jindabyne Education Campus and Tinworth Drive from late June 2024 until early 2025.

A contra-flow arrangement, with traffic controls such as temporary traffic lights, signage and speed limits reductions, will be in place to manage traffic during this period. Vehicles may have to stop along Barry Way and wait for a signal before continuing through the construction area.

Access to adjacent properties, including Jindabyne Sport and Recreation Centre, TAFE NSW Connected Learning Centre, homes, and businesses will be maintained at all times.

We will also be sharing more detailed Works Notifications with the community when we enter each stage of the works and there are changes to travel on Barry Way.

Next steps

The buildings and landscaping works are continuing to progress well, commissioning of the buildings commenced with completion programmed for late 2024.

We are committed to working together with our school communities and stakeholders to deliver the best learning facilities for students. As the project progresses, we will continue to share details with the community for update and feedback.

How can I get involved?

If you have any queries or concerns about this project, you can contact School Infrastructure NSW during business hours on 1300 482 651 or by emailing schoolinfrastructure@det.nsw.edu.au

A dedicated project page will be updated as the project progresses. The webpage can be found at <https://edu.nsw.link/JindabyneEC> or scan the QR code (right). You can register to receive project updates, works notifications and other communications emailed directly to you by completing the contact form on the webpage.

